

SH-3II

CNC 1POINT COIRING MACHINE

Advanced model of multi-functional SH-3 (1 point coiling, Torsion attachment, Initial tension servo) gives further expansion of variety of torsion forming.

MNO (Mec New Operation system) gives user-friendliness, measurement control and multiple production controls.

As free-length gage, choose suitable one from contact type sensor: Motor Sensor (MSD-1), non-contact type sensor: Capacitance Gage and Image Sensor for your needs.



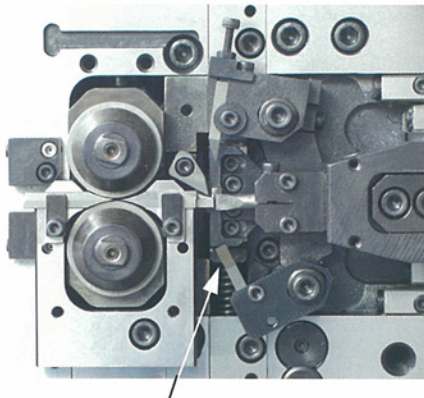
TOSAG Engineering AG
Fuchsweidweg 12, CH-4852 Rothrist
Tel. +41(0)62 794 38 28, Fax +41(0)62 794 14 58
www.tosag.ch philipp.schaerer@tosag.ch

FEATURES

- Available up to 7-axis to control Feed, Cut, Pitch, Point, Torsion, Initial Tension & Arbor (option).
- Easy setup, shorten setup time and speedup of production for independent Cut axis and Torsion axis.
Available to fit assist tool and cutting tool symmetrically that extends the range of work.
- Easy to put on and take off feed rolls with the taper fixture method that provides preciseness of fitting and excellent repeatability. Furthermore, it can control stability of core and surface, i.e. error less than 3/1000. With ultra fine wire attachment, just 16mm long wire guide can be applied instead of 30mm long standard wire guide. It enables to make coiling with very fine wire such as w.d. 0.05mm.
- For making typical cylindrical spring or taper spring, just enter necessary data. The data will be converted by high precision auto program, and desired spring parts will be formed accordingly. When taper syc. rate is adjusted, taper shape can be changed, e.g. straight, mountain, bowl shape so on. 100-step change is available and load can be adjusted easily.
- Program screen displays all axes stationary and columns that can be scrolled from side to side. Program flow and each axis status, INPUT/OUTPUT, JUMP item and so on can be grasped at one view.

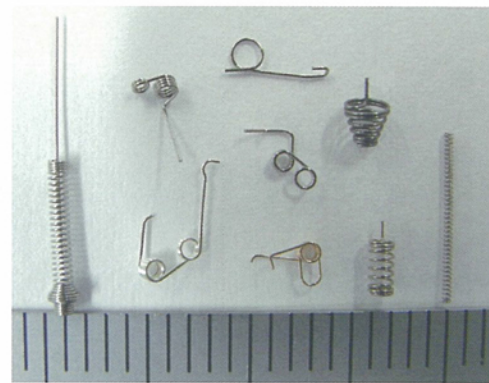
MOTOR SENSOR SYSTEM (standard equipment)

The contact sensor functions as positioning for cut axis, pitch axis and such drive servomotor. It measures free length, outside diameter, leg portion angle in 1/1000mm resolution, and performs corrective control. It functions as well as capacitance sensor or contact type sensor.



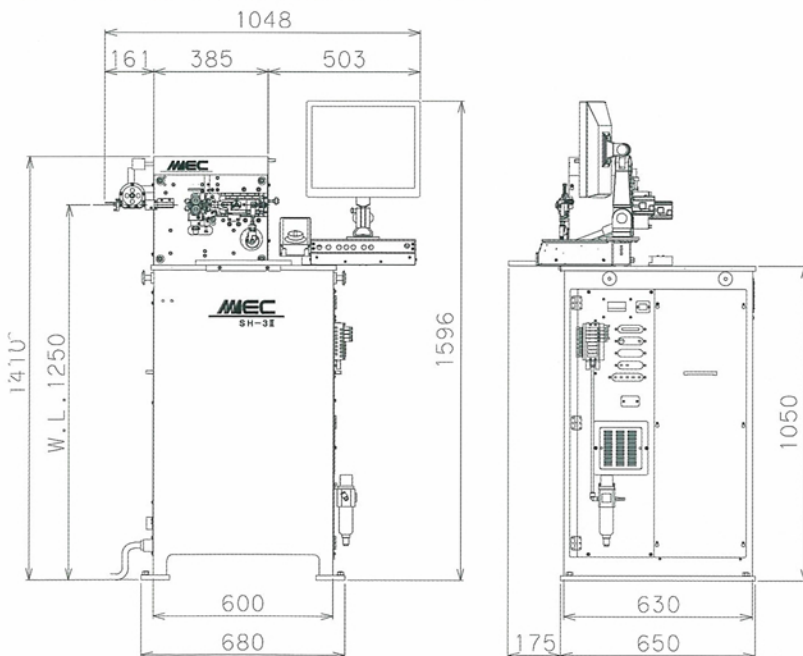
Assist Tool

Applying an assist tool and a cutting tool symmetrically expands work range and gives speedup of production



Torsion spring parts formed on SH-3II

MACHINE SPECIFICATIONS



Specifications are subject to change without notice.

Standard

UltraFineWire A/T
Feed Axis
Cut Axis
Pitch Axis
Point Axis
Torsion A/T Axis
Initial Tension Axis
Arbor Axis (Option)
Solenoid Valves
Air requirements
Power source
Weight
Control Device

WireDia. $\phi 0.08 \sim 0.3 \text{ mm}$
Outside Dia. $\phi 10 \text{ mm}$
D/d 4 or more
WireDia. $\phi 0.03 \sim 0.08 \text{ mm}$
Resolution 0.001mm
Resolution 0.001°
Resolution 0.001mm
Resolution 0.001mm
Resolution 0.001°
Resolution 0.001mm
Resolution 0.001mm
4 pcs (Max 8 pcs available)
Max 0.5 Mpa
200VAC 3-phase, 15A
400kg
Max. 9-axis controllable by PC
OS Windows XP
17" TFT Color LCD
USB thumb drive
0~40 deg. C (32~104 deg. F)

Display
External memory
Service Temperature